

STONELAKE

Master Association



APRIL 2020

Stonelake Clubhouse

3000 Riparian Drive
Elk Grove, CA 95757
Phone: (916) 714-9511
Fax: (916) 714-9514
Stonelakeclub.com

Management Contacts

Jacqueline Gomez, CMCA®, AMS®
General Manager
jacqueline.gomez@fsresidential.com
Phone: (916) 714-9511

Janelle Rodriguez
Assistant Manager of
Property Operations
janelle.rodriguez@fsresidential.com
Phone: (916) 714-9511

Laurene Hearn
Facility Administrator
laurene.hearn@fsresidential.com
Phone: (916) 714-9511

24-Hour Customer Care Center
(800) 428-5588

Accounts Receivable
(800) 428-5588

Check your account online at
www.fsresidential.com

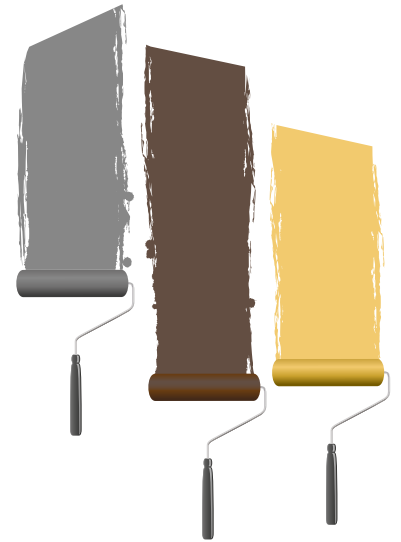
Security Patrol
Stonegate Protection
9:00 p.m. to 5:00 a.m.
(888) 774-0035, ext. 916
security@stonegateprotection.com

Cosumnes CSD
(916) 405-5688 Hotline
hotline@CSDParks.com

Time to Re-Stain Your Fence? Get a Discount at Sherwin-Williams

Due to the high demand of fencing needed in the community, management has reached out to Sherwin-Williams for a community discount on the approved stain. Stonelake Master Association residents will now receive a discount on fence stain at any Sherwin-Williams store by simply mentioning that you live in the Stonelake community and providing them with our account #241925098. Although there is only one approved fence color for Stonelake, Caribou SW3025, a Sherwin-Williams representative will also help you select the appropriate type of stain to use on your fence.

Already planning to re-stain and haven't received notice from the association? Let management know by calling the Clubhouse at (916) 714-9511 or emailing stonelakeadmin.ca@fsresidential.com so that we can note this in your account.



Violation Fine Schedule



Owners may be fined not less than \$50 and not more than \$250 per occurrence or continuation of violations. Fine amounts are to be set by the Board of Directors based on the merits of each violation. Additionally, the board reserves the right to suspend privileges at any level during the enforcement proceedings.

If exterior changes are made without authorization, an automatic \$250 fine will be assessed to your account following a hearing with the Board of Directors. These fines are non-negotiable. Should the violation not be corrected, additional fines will also be assessed.

STONELAKECLUB.COM

Visit our website at Stonelakeclub.com for the latest Stonelake information. The website is updated daily and contains the most up-to-date information about your association.



Community Garage Sale

Looking to do some spring cleaning and get rid of your unwanted items? Well, here is your opportunity. Stonelake Master Association will be holding a community-wide garage sale on Saturday, April 25, beginning at 7:00 a.m. Let management do the advertising for you! We will be posting ads in the Sacramento Bee and on Craigslist to catch peoples' attention. A map and list of all participating homes will also be made available at the clubhouse. Please let Janelle Rodriguez know if you plan to participate at janelle.rodriguez@fsresidential.com no later than Thursday, April 23.

Email Notifications

If you haven't already, join our email distribution list by contacting our office at stonelakeadmin.co@fsresidential.com and requesting that you be added. We send out important information and reminders regarding the community, and we do not want you to miss out.

Committee Members Needed

If you are interested in joining the Architectural Committee, please contact general manager jacqueline.gomez@fsresidential.com for details.

Lighted Address Numbers

Don't forget to replace burnt out bulbs on your illuminated address numbers.

Pancake Breakfast and Egg Hunt

Mark your calendars for Saturday, April 4, and plan to attend our annual Pancake Breakfast and Egg Hunt. A delicious, catered breakfast will be followed by a fun-filled egg hunt for the kids and a photo opportunity with the Easter Bunny! Please remember to bring your cameras and baskets for your goodies.

Breakfast will include: pancakes with all the toppings (butter, syrup, chocolate chips and whipped cream), scrambled eggs, sausage, bacon, diced hash browns, fruit salad, juice, milk, and coffee.

A small fee of just \$5 per Stonelake resident, and \$7 for guests (maximum 2 per household), will be due at the time of sign-up. Sign-ups for this event opened on March 16 and will close once full. Space is limited and will fill up quickly, so don't put off making your family's reservation. Please note that we are unable to accept debit/credit cards for payment.

The available seating times are:

- 8:00 a.m.
- 9:00 a.m.
- 10:00 a.m.
- 11:00 a.m.

Upcoming Meeting Dates

- **Architectural meetings** – Held on the first Tuesday of every month at 6:00 p.m. in the Clubhouse located at 3000 Riparian Way, Elk Grove, CA 95757.
- **Open session board meetings** – Held on the second Tuesday of the month at 7:00 p.m. in the Clubhouse located at 3000 Riparian Way, Elk Grove, CA 95757.

Visit Stonelakeclub.com, regularly for notices regarding meeting date changes. Also, copies of the CC&Rs, Bylaws and Rules and Regulations are posted there for your convenience.

Members Only - Mondays and Fridays

Stonelake members are reminded that every Monday and Friday are Members Only days at the Clubhouse. As a result, members are not allowed to sign in guests on these days.

Customer Care Center

The goal of FirstService Residential is to utilize the Customer Care Center to streamline all HOA processes. We are just a phone call away, so please contact us any time at (800) 428-5588.

BOARD OF DIRECTORS

President
Jacob Rambo

Vice President
Barbara Patterson

Secretary
Alison Aleman

Treasurer
Stephen Hodge

Director
Nicole York

Trees – Maintaining Your Living Asset

The greatest asset in your landscape can also be your greatest liability—your tree. With the proper maintenance and care, your trees can provide your home numerous benefits both aesthetic and functional. Did you know that a mature tree could help lower your air conditioning bills by as much as 25% in the summer? The goal of each homeowner should be to develop and maintain a healthy, mature tree.

Tree Pruning

Proper pruning is the single-most important thing you can do for a tree. Pruning practices should lead to the best development of your tree to preserve and enhance the beauty, structural integrity and functional value of a tree. So, before you cut that tree into the shape of a basket, ask yourself the following questions:

- Will this add to the natural beauty of the tree?
- Will this improve the structural integrity of the tree?
- Will this add to the function or value of the tree?

Topping Is NOT Pruning

Topping is a “bad haircut” for a tree that will never grow back correctly. Topping is no longer considered a pruning practice by tree professionals or arborists. It will result in long-term damage of the tree and a potential liability for you.

When pruning your trees, no more than 25% of the tree should be removed at a time. Any more will throw the tree into a state of stress, possibly causing additional, unwanted growth. The tree pruning should focus on the removal of dead or crossing branches, as well as any limbs that may present a long-term liability. Also, raise the lower limbs of a tree, especially in the turf area. Damage to the tree, not to mention the difficulty of mowing around the tree, can be prevented.

The trees are an important, yet forgotten, asset of the garden. In actuality, your tree is the most valuable plant in your garden. Shop any nursery and price the cost of a tree. Give it the proper attention and care that it deserves.



Clubhouse Class Schedule

PERSONAL TRAINING

Contact Kylie Halcomb at (530) 300-7233.
Personal training is \$60 per 50-minute session.

YOGA

Monday, Tuesday: 9:30 a.m. – 10:20 a.m.
Tuesday: 7:00 p.m. – 8:00 p.m.
Yoga is \$5 per class for members, \$7 for guests.

ZUMBA/CARDIO DANCE

Friday: 6:15 p.m. – 7:00 p.m.
Saturday: 9:15 a.m. – 10:15 a.m.
Zumba is \$5 per class, \$7 for guests.

YUANJI #1*

Sunday–Saturday: 7:00 a.m. – 8:00 a.m.

YUANJI #2*

Monday–Thursday: 8:00 a.m. – 9:00 a.m.

GI-GONG*

Sunday, Friday, Saturday: 8:00 a.m. – 9:00 a.m.

TAI CHI*

Monday, Wednesday, Friday:
7:00 p.m. – 8:00 p.m.

BALLROOM DANCE*

Friday: 8:00 p.m. – 9:00 p.m.

BALLROOM/LATIN DANCE*

Sunday: 11:30 a.m. – 12:30 p.m.

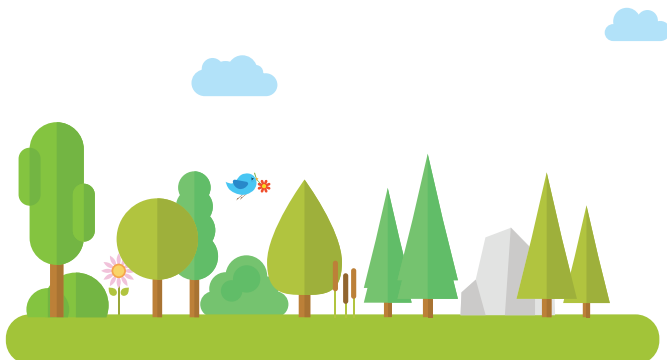
LINE DANCE*

Sunday: 10:30 a.m. – 11:30 a.m.

QIGONG EXERCISE & TAI CHI WU STYLE*

Thursday: 7:00 p.m. – 8:00 p.m.

**no cost per class*





Stonelake
Master Association
FirstService Residential
3000 Riparian Drive,
Elk Grove, CA 95757
www.stonelakeclub.com

PRSR FIRST CLASS
US POSTAGE PAID
SANTA ANA, CA
PERMIT 1333

SUNDAY	MONDAY	TUESDAY	WEDNESDAY	THURSDAY	FRIDAY	SATURDAY
LEGEND: -Free Classes -Meetings -Paid classes -Requires Sign-up -Scheduled Cleanings -Community Event			AR Cleaning 6:00 a.m. - 7:00 a.m. Yuanji #1 7:00 a.m. - 8:00 a.m. Yuanji #2 8:00 a.m. - 9:00 a.m. Tai Chi 7:00 p.m. - 8:00 p.m.	AR Cleaning 6:00 a.m. - 7:00 a.m. Yuanji #1 7:00 a.m. - 8:00 a.m. Yuanji #2 8:00 a.m. - 9:00 a.m. Qigong Exercise & Tai Chi Wu Style 7:00 p.m. - 8:00 p.m.	AR Cleaning 6:00 a.m. - 7:00 a.m. Yuanji #1 7:00 a.m. - 8:00 a.m. Gi-Gong - 8:00 a.m. - 9:00 a.m. Zumba/Cardio Dance 6:15 p.m. - 7:00 p.m. Tai Chi - 7:00 p.m. - 8:00 p.m. Ballroom Dance 8:00 p.m. - 9:00 p.m.	AR Cleaning 7:00 a.m. - 8:00 a.m. Yuanji #1 7:00 a.m. - 8:00 a.m. Gi-Gong 8:00 a.m. - 9:00 a.m. Zumba/Cardio Dance 9:15 a.m. - 10:15 a.m. Easter Breakfast & Egg Hunt 8:00 a.m. - 12:00 p.m.
AR Cleaning 6:00 a.m. - 7:00 a.m. Yuanji #1 - 7:00 a.m. - 8:00 a.m. Gi-Gong - 8:00 a.m. - 9:00 a.m. Line Dance 10:30 a.m. - 11:30 a.m. Ballroom/Latin Dance 11:30 a.m. - 12:30 p.m.	AR Cleaning 6:00 a.m. - 7:00 a.m. Yuanji #1 7:00 a.m. - 8:00 a.m. Yuanji #2 8:00 a.m. - 9:00 a.m. Yoga 9:30 a.m. - 10:20 a.m. Tai Chi 7:00 p.m. - 8:00 p.m.	AR Cleaning 6:00 a.m. - 7:00 a.m. Yuanji #1 - 7:00 a.m. - 8:00 a.m. Yuanji #2 - 8:00 a.m. - 9:00 a.m. Yoga 9:30 a.m. - 10:20 a.m. Tai Chi 7:00 p.m. - 8:00 p.m. ACC Meeting - 6:00 p.m.	AR Cleaning 6:00 a.m. - 7:00 a.m. Yuanji #1 7:00 a.m. - 8:00 a.m. Yuanji #2 8:00 a.m. - 9:00 a.m. Tai Chi 7:00 p.m. - 8:00 p.m.	AR Cleaning 6:00 a.m. - 7:00 a.m. Yuanji #1 7:00 a.m. - 8:00 a.m. Yuanji #2 8:00 a.m. - 9:00 a.m. Qigong Exercise & Tai Chi Wu Style 7:00 p.m. - 8:00 p.m.	AR Cleaning 6:00 a.m. - 7:00 a.m. Yuanji #1 7:00 a.m. - 8:00 a.m. Gi-Gong - 8:00 a.m. - 9:00 a.m. Zumba/Cardio Dance 6:15 p.m. - 7:00 p.m. Tai Chi - 7:00 p.m. - 8:00 p.m. Ballroom Dance 8:00 p.m. - 9:00 p.m.	AR Cleaning 7:00 a.m. - 8:00 a.m. Yuanji #1 7:00 a.m. - 8:00 a.m. Gi-Gong 8:00 a.m. - 9:00 a.m. Zumba/Cardio Dance 9:15 a.m. - 10:15 a.m.
AR Cleaning 6:00 a.m. - 7:00 a.m. Yuanji #1 - 7:00 a.m. - 8:00 a.m. Gi-Gong - 8:00 a.m. - 9:00 a.m. Line Dance 10:30 a.m. - 11:30 a.m. Ballroom/Latin Dance 11:30 a.m. - 12:30 p.m. Easter Sunday	AR Cleaning 6:00 a.m. - 7:00 a.m. Yuanji #1 7:00 a.m. - 8:00 a.m. Yuanji #2 8:00 a.m. - 9:00 a.m. Yoga 9:30 a.m. - 10:20 a.m. Tai Chi 7:00 p.m. - 8:00 p.m.	AR Cleaning 6:00 a.m. - 7:00 a.m. Yuanji #1 - 7:00 a.m. - 8:00 a.m. Yuanji #2 - 8:00 a.m. - 9:00 a.m. Yoga 9:30 a.m. - 10:20 a.m. Tai Chi 7:00 p.m. - 8:00 p.m. Board Meeting - 7:00 p.m.	AR Cleaning 6:00 a.m. - 7:00 a.m. Yuanji #1 7:00 a.m. - 8:00 a.m. Yuanji #2 8:00 a.m. - 9:00 a.m. Tai Chi 7:00 p.m. - 8:00 p.m.	AR Cleaning 6:00 a.m. - 7:00 a.m. Yuanji #1 7:00 a.m. - 8:00 a.m. Yuanji #2 8:00 a.m. - 9:00 a.m. Qigong Exercise & Tai Chi Wu Style 7:00 p.m. - 8:00 p.m.	AR Cleaning 6:00 a.m. - 7:00 a.m. Yuanji #1 7:00 a.m. - 8:00 a.m. Gi-Gong - 8:00 a.m. - 9:00 a.m. Zumba/Cardio Dance 6:15 p.m. - 7:00 p.m. Tai Chi - 7:00 p.m. - 8:00 p.m. Ballroom Dance 8:00 p.m. - 9:00 p.m.	AR Cleaning 7:00 a.m. - 8:00 a.m. Yuanji #1 7:00 a.m. - 8:00 a.m. Gi-Gong 8:00 a.m. - 9:00 a.m. Zumba/Cardio Dance 9:15 a.m. - 10:15 a.m.
AR Cleaning 6:00 a.m. - 7:00 a.m. Yuanji #1 7:00 a.m. - 8:00 a.m. Gi-Gong 8:00 a.m. - 9:00 a.m. Line Dance 10:30 a.m. - 11:30 a.m. Ballroom/Latin Dance 11:30 a.m. - 12:30 p.m.	AR Cleaning 6:00 a.m. - 7:00 a.m. Yuanji #1 7:00 a.m. - 8:00 a.m. Yuanji #2 8:00 a.m. - 9:00 a.m. Yoga 9:30 a.m. - 10:20 a.m. Tai Chi 7:00 p.m. - 8:00 p.m.	AR Cleaning 6:00 a.m. - 7:00 a.m. Yuanji #1 - 7:00 a.m. - 8:00 a.m. Yuanji #2 - 8:00 a.m. - 9:00 a.m. Yoga 9:30 a.m. - 10:20 a.m. Tai Chi 7:00 p.m. - 8:00 p.m.	AR Cleaning 6:00 a.m. - 7:00 a.m. Yuanji #1 7:00 a.m. - 8:00 a.m. Yuanji #2 8:00 a.m. - 9:00 a.m. Tai Chi 7:00 p.m. - 8:00 p.m.	AR Cleaning 6:00 a.m. - 7:00 a.m. Yuanji #1 7:00 a.m. - 8:00 a.m. Yuanji #2 8:00 a.m. - 9:00 a.m. Qigong Exercise & Tai Chi Wu Style 7:00 p.m. - 8:00 p.m.	AR Cleaning 6:00 a.m. - 7:00 a.m. Yuanji #1 7:00 a.m. - 8:00 a.m. Gi-Gong - 8:00 a.m. - 9:00 a.m. Zumba/Cardio Dance 6:15 p.m. - 7:00 p.m. Tai Chi - 7:00 p.m. - 8:00 p.m. Ballroom Dance 8:00 p.m. - 9:00 p.m.	AR Cleaning 7:00 a.m. - 8:00 a.m. Yuanji #1 7:00 a.m. - 8:00 a.m. Gi-Gong 8:00 a.m. - 9:00 a.m. Zumba/Cardio Dance 9:15 a.m. - 10:15 a.m. Community Wide Garage Sale - 7:00 a.m.
AR Cleaning 6:00 a.m. - 7:00 a.m. Yuanji #1 7:00 a.m. - 8:00 a.m. Gi-Gong 8:00 a.m. - 9:00 a.m. Line Dance 10:30 a.m. - 11:30 a.m. Ballroom/Latin Dance 11:30 a.m. - 12:30 p.m.	AR Cleaning 6:00 a.m. - 7:00 a.m. Yuanji #1 7:00 a.m. - 8:00 a.m. Yuanji #2 8:00 a.m. - 9:00 a.m. Yoga 9:30 a.m. - 10:20 a.m. Tai Chi 7:00 p.m. - 8:00 p.m.	AR Cleaning 6:00 a.m. - 7:00 a.m. Yuanji #1 - 7:00 a.m. - 8:00 a.m. Yuanji #2 - 8:00 a.m. - 9:00 a.m. Yoga 9:30 a.m. - 10:20 a.m. Tai Chi 7:00 p.m. - 8:00 p.m.	AR Cleaning 6:00 a.m. - 7:00 a.m. Yuanji #1 7:00 a.m. - 8:00 a.m. Yuanji #2 8:00 a.m. - 9:00 a.m. Tai Chi 7:00 p.m. - 8:00 p.m.	AR Cleaning 6:00 a.m. - 7:00 a.m. Yuanji #1 7:00 a.m. - 8:00 a.m. Yuanji #2 8:00 a.m. - 9:00 a.m. Qigong Exercise & Tai Chi Wu Style 7:00 p.m. - 8:00 p.m.		